

475 Field Communicator PRODUCT DISCONTINUED

- Full-color graphical user interface
- Powerful field diagnostics
- Bluetooth® communication
- Long-lasting Lithium-Ion power module
- Universal support for HART® and FOUNDATION™ Fieldbus devices



The 475 Field Communicator is designed to support all HART and FOUNDATION Fieldbus devices from all vendors.

Product Lifecycle Announcement

The 475 Field Communicator is no longer be available for sale. Existing communicators will be supported through October 2020. For long-term support of your program or new handheld requirements, see Emerson's next generation field communicator - the AMS Trex Device Communicator. Learn more at www.emerson.com/trex.

Introduction

The 475 Field Communicator builds on the industry-leading technology of the 375 Field Communicator while adding innovative new capabilities including color display, Bluetooth communication, and advanced field diagnostics with applications like ValveLink™ Mobile.

What you get is the most powerful handheld available – universal, user upgradeable, intrinsically safe, rugged and reliable. Only the 475 Field Communicator can deliver all this in a single handheld communicator.

Product Description

The 475 Field Communicator is designed to simplify your work in the field. The intuitive full color user interface allows you to leverage the same practices for both HART and FOUNDATION Fieldbus devices. It includes a larger touch screen than PDAs or Pocket PCs, supports HART versions 5, 6, and 7 (including *WirelessHART™*) devices, and allows you to upgrade your 475 Field Communicator onsite using the Internet.





Gain advanced diagnostics in the field through ValveLink Mobile and enhanced graphics.

See and Feel the Difference

The touch screen display uses transfective technology, making it easy to read in both bright sunlight and normal lighting. To make sure all conditions are covered, a multi-level backlight is included, allowing bright, crisp display even in plant areas with dim light.

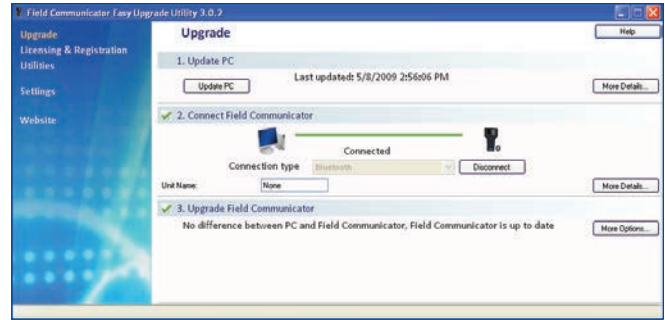
The touch screen display and large physical navigation buttons provide for efficient use both on the bench and in the field. The icon-based user interface allows you to navigate quickly and efficiently.

The full color graphics capability is provided as standard with every 475 Field Communicator. It uses powerful EDDL technology to allow you to read data from field devices in a graphical manner. Charts, graphs, gauges, and product images are just a few of the ways in which important device data can be displayed using the 475 Field Communicator's color LCD display.

The weight of the 475 Field Communicator is evenly distributed for comfortable one-handed operation in the field. It runs on Windows CE, a robust, real-time operating system. The 475 Field Communicator has plenty of memory to allow for future expansion. It has 32 MB of application memory and 1 GB of memory on its System Card.

New HART and FOUNDATION Fieldbus devices, as well as functional updates to existing devices, are introduced continually by device vendors. Keeping up-to-date with the required Device Descriptions (DDs) for all the devices in your plant can be a real challenge.

With *Easy Upgrade*, when new HART and FOUNDATION Fieldbus DDs become available, you can simply download them from the Internet and upgrade your 475 Field Communicator. Update at your site, within your control, when it's convenient for you.



The Easy Upgrade Utility allows you to transfer system software, DDs, and HART device configurations between the 475 Field Communicator and a PC.

Universal – HART and FOUNDATION Fieldbus

With over 1,300 different HART and FOUNDATION Fieldbus devices available from more than 100 manufacturers, the 475 Field Communicator works with all your devices to positively impact your bottom line.

Through *Easy Upgrade*, you always have access to the latest HART and Fieldbus drivers. With the 475 Field Communicator, you are guaranteed universal HART and FOUNDATION Fieldbus support in a single, intrinsically safe handheld communicator.

Intrinsically Safe

The 475 Field Communicator meets the Intrinsic Safety requirements of the listed regulatory agencies and standards. All of the available Hazardous Locations approvals are provided in a single model option (see Ordering Information).

- CENELEC/ATEX
- Factory Mutual (FM)
- Canadian Standards Association (CSA)
- FISCO
- IECEx



Even the power module is approved for installation in hazardous areas.



The 475 Field Communicator, with its handy carrying case, provides a single tool for configuring and diagnosing HART and FOUNDATION Fieldbus devices.

Rugged and Reliable

It's called "Field Communicator" for a reason. Some tasks just have to be performed at the device in the field. The 475 Field Communicator is designed for tough use in your plant or mill. Its large keys and physical navigation buttons allow for one-handed operation, even with your work gloves on. The rugged display is designed to take the knocks and shocks from normal use in the plant.

The 475 Field Communicator's Protective Rubber Boot provides added protection in the field and in your toolbox. Both the rubber boot and 475 housing are designed in accordance with Intrinsic Safety standards to limit the build up of static electrical energy.

The 475 Field Communicator is designed, manufactured, and tested to very demanding specifications. It is ready to go wherever you need to go to get the job done.

Powerful Diagnostics

Interface with AMS Device Manager

Easily store and print device configurations for analysis and documentation requirements.

The 475 Field Communicator is fully compatible with AMS Device Manager, the industry standard for asset management software. In fact, Control Magazine readers have selected AMS Device Manager as the #1 Calibration Software package for over 13 years in a row.

AMS Device Manager uses the intelligence from field devices to create a predictive maintenance environment. AMS Device Manager allows you to configure, calibrate, document, and troubleshoot HART, FOUNDATION Fieldbus, and WirelessHART devices.

Transfer device configuration data to AMS Device Manager via the IrDA port or Bluetooth interface on your 475 Field Communicator and PC. Take your 475 Field Communicator out to the field to configure or update one or more devices. Save up to 1,000 device configurations in your communicator or transfer them to AMS Device Manager.

Together, the 475 Field Communicator and AMS Device Manager enable you to efficiently manage all of your devices.

Device Configuration Management

Using the *Easy Upgrade Utility*, you can back up hundreds of device configurations and can transfer them between your communicator and a PC. This library of device configurations is easy to view and print for analysis.

Identify Valve Problems

Run valve diagnostics in the field with the ValveLink Mobile application. You can quickly perform tests including valve signature, dynamic error band, PD one button sweep, and step response on HART and FOUNDATION Fieldbus Fisher® FIELDVUE™ digital valve controllers.



The protective rubber boot provides added protection in the field.

The intuitive user interface makes ValveLink Mobile easy to use and understand. Diagnose issues in the field or transfer the results to an asset management system like AMS Suite for in-depth analysis and documentation.

Diagnose Network Problems

The 475 Field Communicator can be used to configure all the FOUNDATION Fieldbus devices in your plant. Use it to perform diagnostics for effective start-up and troubleshooting of fieldbus segments. Create a quality segment by diagnosing the network DC voltage and average noise.

Detect power supply problems by monitoring low frequency noise on a segment. Locate incorrect terminations and faulty devices by diagnosing the communications signal level.

For HART loops, the 475 Field Communicator allows you to verify whether the DC voltage in the loop is correct.



Specifications

Processor And Memory	
Microprocessor	80 MHz Hitachi® SH3
Memory Internal Flash	32 MB
System Card	1 GB secure digital card
RAM	32 MB
Physical	
Weight	Approximately 1.65 lb. (0.75kg) with battery
Display	1/4 VGA (240 by 320 pixels) color, 3.5 in. (8.9 cm) transfective display with touchscreen
	Anti-glare coated
Keypad	25 keys including 4 action keys, 12 alphanumeric keys, tab key, function key, backlight key, power key, and 4 cursor-control (arrow) keys; membrane design with tactile feedback
Power Supply / Charger	
Battery	Rechargeable Lithium-Ion power module
Battery Operating Time	20 hours – continuous use
	40 hours – typical use
	80 hours – standby mode
Battery Charger Options	Input voltage 100-240 VAC, 50-60 Hz
	Cables included with U.S., Europe, and U.K. plugs

Connection	
Battery Charger	Mini DIN 6-pin jack
HART and Fieldbus	Three 4mm banana jacks (one common to HART and FOUNDATION Fieldbus)
IrDA Port	IrDA (Infrared Data Access) port supporting up to 115 Kbps
	±15 degrees recommended maximum angle from center line
	Approximately 18 in. (45.7 cm) recommended maximum distance
Bluetooth	Up to 32.8 ft. (10 m) communication distance
	Uses standard Windows drivers
	FCC, IC, and CE approvals
	Certified for use in over 60 countries
Environmental	
Usage	-10°C (14°F) to +50°C (122°F)
Battery	0% to 95% RH (non-condensing) for 0°C (32°F) to +50°C (122°F)
Charge	10°C (50°F) to +40°C (104°F)
Storage With Batteries	-20°C (-4°F) to +55°C (131°F)
Storage Without Batteries	-20°C (-4°F) to +60°C (140°F)
Enclosure Rating	IP51 (from front)
Shock	Tested to survive a 1-meter drop test onto concrete
Easy Upgrade Requirements	
Usage	PC with Internet access
	CD Rom drive
	IrDA port (or adapter) or Bluetooth (or adapter)
	SD Card Reader (required for some upgrades)
	Windows XP (SP2 or SP3), Windows Vista Business (SP1), or Windows 7

475 Field Communicator Spare Parts List

Description	Part Number
00275-0096-0001	Ruggedized 250 Ohm Load Resistor
00475-0002-0022	Rechargeable Lithium-Ion Power Module
00475-0003-0022	Power Supply & Charger (Li-ion/NiMH) US/UK/EU connection types included)
00375-0003-0002	Power Supply/Charger Standard Cord Set (US/UK/EU cords)
00375-0003-0003	Australian (AU) cord for Power Supply/Charger
TREX-0004-0001	Lead Set with connectors
00475-0005-0002	Hand Strap (pack of 2)
00475-0005-0003	Carrying Case (with spare Hand Strap and Stylus)
TREX-0005-0004	Magnetic Hanger
00475-0005-0005	Protective Rubber Boot with Stand
00475-0006-0001	Stylus (pack of 2)
00375-0015-0002	IrDA to USB Adapter ⁽¹⁾
00375-0018-0022	System Card (SD) Reader (with USB Interface) ⁽²⁾
00475-0018-0023	Bluetooth Adapter ⁽¹⁾⁽⁹⁾
00475-0044-0001	Stand
00475-0019-FK01	Field Accessory Kit ⁽⁶⁾
00475-0019-SK01	Shop Accessory Kit (Bluetooth) ⁽⁷⁾⁽⁹⁾
00475-0019-SK02	Shop Accessory Kit (non-Bluetooth) ⁽⁷⁾
00475-0045-3001	Getting Started Guide
00475-0049-DVD1	Resource DVD
Online Licensing⁽⁴⁾	
00375-0142-0002	FOUNDATION Fieldbus License Via Web
00475-0142-2003	Easy Upgrade (New/Renew) License via Web ⁽³⁾
AMS Device Manager Handheld Interface Kit⁽⁵⁾	
AW7005HC00025	AMS Device Manager Field Communicator Interface Kit (25 tags)
AW7005HC20000	AMS Device Manager Field Communicator Interface Kit (100 Tags and above)

- (1) Can be used to support communication between the 375/475 and the *Easy Upgrade* Programming Utility or AMS Device Manager (with Handheld Communicator Interface Kit). Either IrDA or Bluetooth communication is required to register the 375/475 or use the Online Licensing system.
- (2) The System Card (SD) Reader allows a user the ability to upgrade a System Card much faster than when using IRDA or Bluetooth. Due to file size constraints, major upgrades require the use of a card reader.
- (3) The *Easy Upgrade* feature allows users to add new System Application software and Device Descriptions (DDs) to the 475. To upgrade without this feature, the System Card would have to be sent to a Service Center (fee would apply). Since 475 will go in retired status soon, all new or renewals of Easy Upgrade will expire Oct 30, 2020.
- (4) These parts support license upgrades of System Cards in the field through the use of the Field Communicator Online Licensing system. The capacity is available to end users and may also be performed by an agent on the user's behalf. It is at the agents discretion if an additional fee should apply. Any order must be accompanied by the System Card S/N. Instant notification of when the licenses are available for download are sent to emails provided at time of order. For further details, see the Online Licensing procedure at www.fieldcommunicator.com.
- (5) Requires AMS Device Manager (v6.2 or higher). Both AMS Device Manager and the Handheld Communicator Interface Kit are available for sale through select channels only. See www.assetweb.com for more details.
- (6) Contains Protective Rubber Boot, Ruggedized 250 Ohm Load Resistor, Magnetic Hanger, and Stylus Pack.
- (7) Contains Field Accessory Kit plus System Card Reader, Bluetooth Adapter, and Resource DVD. Non-Bluetooth model substitutes IRDA to USB adapter for Bluetooth adapter.
- (8) Includes localized versions for English, German, Russian, and Japanese.
- (9) Not available for purchase from Rosemount - Chanhassen. Use alternative channel to order this part.

©2020, Emerson. All rights reserved.

The Emerson logo is a trademark and service mark of Emerson Electric Co. All other marks are the property of their respective owners.

The contents of this publication are presented for informational purposes only, and while diligent efforts were made to ensure their accuracy, they are not to be construed as warranties or guarantees, express or implied, regarding the products or services described herein or their use or applicability. All sales are governed by our terms and conditions, which are available on request. We reserve the right to modify or improve the designs or specifications of our products at any time without notice.

Emerson
Reliability Solutions
12001 Technology Drive
Eden Prairie, MN 55344 USA

 www.fieldcommunicator.com

